



Half Moon Lane, Epping, CM16

BUTLER  STAG





**GUIDE PRICE: £350,000 - £375,000**  
**Revival Court is an exclusive luxury development** Positioned in one of the most enviable locations at the very start of the bustling and historic Epping High Street, the development offers an exceptional blend of convenience, style and contemporary living.



## Leasehold

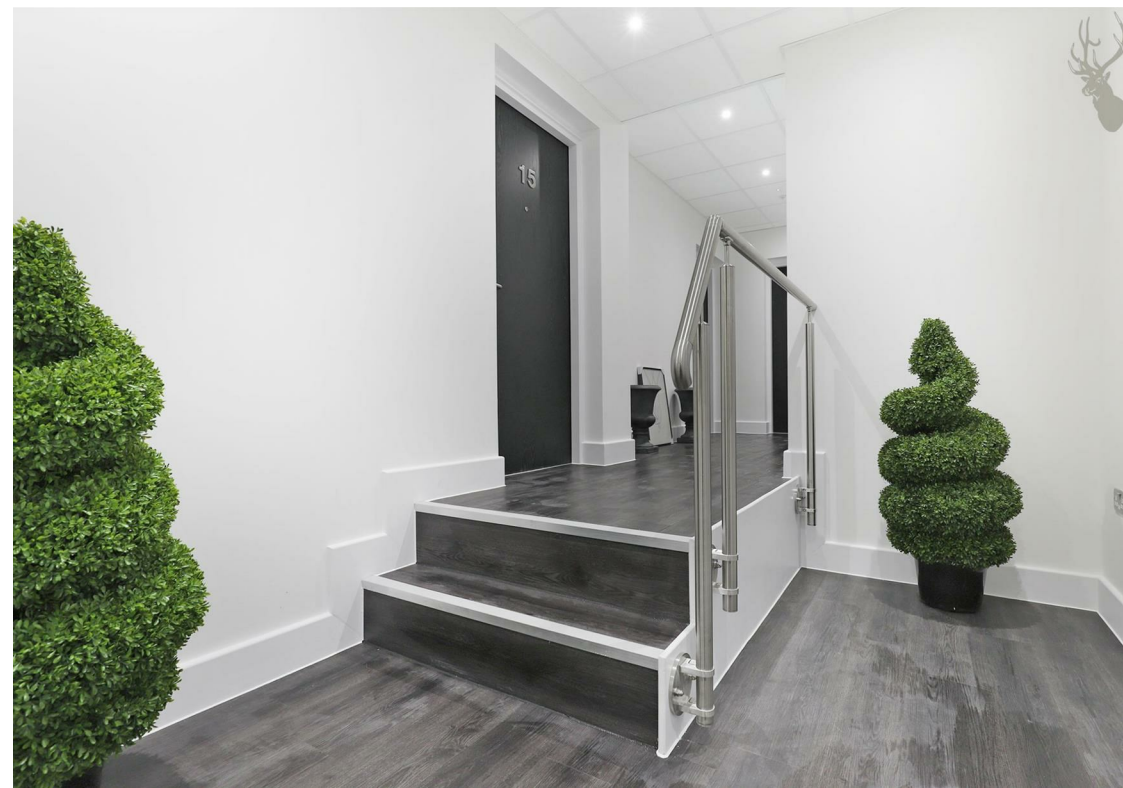
- One Bedroom Apartment
- Ground Floor
- Video Entryphone System
- Parking Available
- Open Plan Accomodation
- Private Outside Terrace
- Central High Street Location

Within the development is a beautifully designed ground floor one-bedroom apartment, offering modern finishes, generous living space and direct access to all the amenities Epping has to offer.

Epping is a fantastic market town, ideally situated approximately five miles from Junction 7 of the M11 and a similar distance from the M25 London Orbital Motorway. The town offers a comprehensive range of social, recreational and educational facilities, as well as the vast natural expanse of nearby Epping Forest. For commuters, Epping is the first stop on the Central Line, providing direct and efficient access into many of London's major underground stations.

Revival Court combines prime positioning with modern luxury—perfect for those seeking comfort, style and exceptional connectivity in one of the area's most desirable settings.





## Revival Court, CM16

Approx. Gross Internal Area 548 Sq Ft - 50.91 Sq M  
Approx. Gross Balcony Area 35 Sq Ft - 3.25 Sq M

BUTLER & STAG



### Ground Floor

Floor Area 548 Sq Ft - 50.91 Sq M



Measured according to RICS IPMS2. Floor plan is for illustrative purposes only and is not to scale. Every attempt has been made to ensure the accuracy of the floor plan shown, however all measurements, fixtures, fittings and data shown are an approximate interpretation for illustrative purposes only. 1 sq m = 10.76 sq feet.

lpaplus.com

Date: 12/12/2023

IMPORTANT NOTICE - These particulars have been prepared in good faith and they are not intended to constitute part of an offer or contract. We have not performed a structural survey on this property and the services, appliances and specific fittings have not been tested. All photographs, measurements, floor plans and distances referred to are given as a guide and should not be relied upon.

BUTLER & STAG

☎ 01992 667666

🏠 4 Forest Drive, Theydon Bois, Essex, CM16 7EY

✉ theydon@butlerandstag.com

www.butlerandstag.uk